

Helium Conservation in Volatile Organic Compound Analysis Using U.S. EPA Method 8260C

Andrea Caruso,¹ Tommaso Albertini,¹ Jacob A. Rebholz²

¹Thermo Fisher Scientific, Milan, Italy; ²Teledyne Tekmar, Mason, Ohio

Key Words

Environmental, Gas chromatography, Instant Connect Helium Saver Module, ISQ, Purge and trap, VOC, Volatile organic compounds

Goal

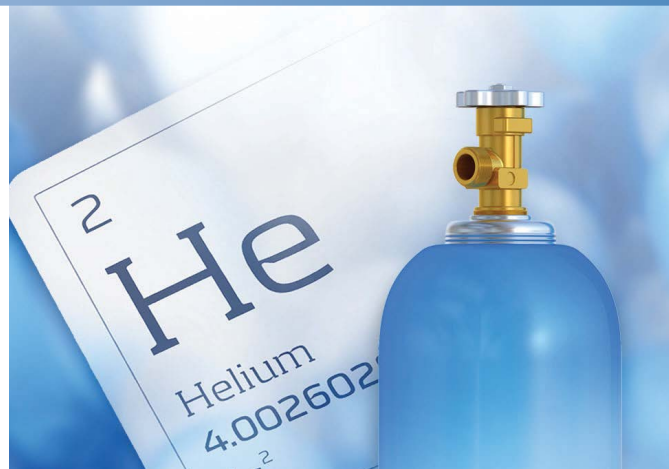
To demonstrate the effectiveness of the Thermo Scientific™ Helium Saver Module coupled with the nitrogen purge feature of the Teledyne Tekmar Atomx automated VOC sample prep system for producing quality data while reducing helium consumption.

Introduction

As helium becomes more difficult and expensive to procure, there has been a push to find alternative carrier gas options for gas chromatography-mass spectrometry (GC-MS) applications. Hydrogen, which can be cheaply and easily generated in the lab, is chief among these alternative carrier gases. However, as a carrier gas for GC-MS, hydrogen has several disadvantages, including its highly reactive and flammable nature.

Thermo Fisher Scientific developed the Helium Saver Module to provide an alternative to using a different carrier gas. This GC inlet greatly reduces the amount of helium used in GC analysis. To further reduce helium consumption, this study used the nitrogen purge option of the Teledyne Tekmar Atomx automated VOC sample prep system. Thanks to the Atomx system mass flow controller, accurate purge volumes can be achieved with nitrogen as well as helium.

Here, we evaluate the effectiveness of a system that combines the Atomx nitrogen purge option with the Helium Saver Module for VOC analysis using U.S. EPA method 8260C. EPA method 8260C is one of the most widespread methods for the analysis of VOCs. One of the techniques recommended by the method for the sampling and introduction of the analytes is purge and trap. Purge and trap coupled with GC-MS enables the greatest potential selectivity and sensitivity for the analysis.



Method Setup

Recommended Instrument Conditions

TRACE 1310 GC

Injection volume:	1 µL
Liner:	Splitless w/glass wool (P/N 453A1925)
Carrier gas:	Helium
Column type:	Thermo Scientific™ TraceGOLD TG-VMS 20 m, 0.18 mm, 1 µm (P/N 260804950)
Column oven:	Ready delay 1 min, initial temperature 35 °C, hold 3 min, ramp 14 °C/min to 100 °C, ramp 25 °C/min to 210 °C, hold 2 min
Helium Saver Injector:	200 °C; split with a split flow of 12 mL/min, helium delay 0.1 min
Column flow:	Constant flow at 1.5 mL/min

ISQ LT Mass Spectrometer

Source temperature: 325 °C

Transfer line temperature: 230 °C

FS Conditions		
Acquisition start	Mass range	Dwell time
1.75	35–260	0.2

Atomx purge and trap parameters			
Trap	K Trap	Dry purge time	2.00 min
Sample volume	5.0 mL	Dry purge flow	100 mL/min
Spurge vessel	40 °C	Desorb time	0.50 min
Purge gas	Nitrogen	Desorb temp	250 °C
Purge time	11.00 min	Transfer line temp	140 °C
Purge flow	40 mL/min		

Methods

This analysis used the Thermo Scientific™ ISQ LT Single Quadrupole GC-MS system equipped with a Thermo Scientific™ TRACE™ 1310 gas chromatograph. The system was equipped with an Instant Connect Helium Saver Module with a splitless liner (P/N 453A1925). The column used was a Thermo Scientific™ TraceGOLD TG-VMS 20 m, 0.18 mm 1 µm (P/N 26080-4950).

The analysis was run in full scan mode. Samples were acquired and quantified using the Thermo Scientific™ TraceFinder™ EFS software. The Atomx automated sample prep system was equipped with a K trap.

Results and Discussion

A nine-point calibration curve was prepared in deionized water, ranging from 0.5–200 ppb. A mixed internal standard and surrogate standard solution was prepared in methanol and injected to a concentration of 25 ppb via the Atomx standard addition system. The preparation of standards was done according to the procedure detailed in U.S. EPA Method 8260C. The TIC chromatogram of the 2 ppb calibration standard is presented in Figure 1.

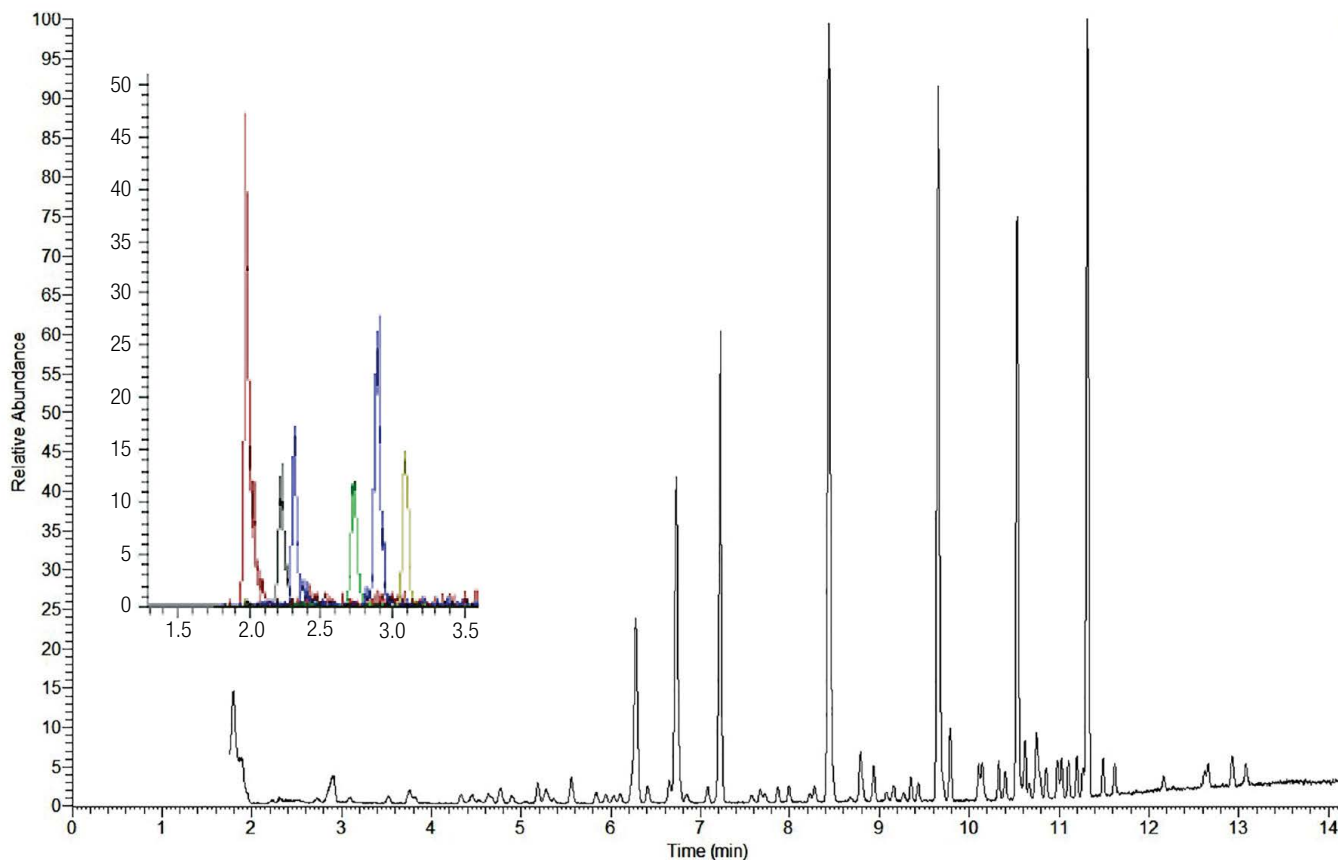


Figure 1. Chromatogram with VOC standard at 2 ppb in full scan mode. The inset depicts the extracted ions for the first six gases.

All calibrations are average response factor (Avg RF), unless otherwise noted. Those that did not meet the minimum requirements for Avg RF utilized a 1/ \times weighted quadratic calibration. The relative standard deviation (%RSD) and Avg RF is reported for each target compound, internal standard, and surrogate standard in Table 2.

Method detection limits (MDL) were determined for all 91 target compounds. Seven replicates spiked to a concentration of 0.5 ppb were used to determine the MDL of each target compound. One exception was the handling of the para and meta isomers of xylene, which were combined, and therefore analyzed at a concentration of 1 ppb. The MDLs, as well as their %RSDs are presented in Table 2.

Table 1. Calibration and MDL results.

Compound	Calibration		MDL		Compound	Calibration		MDL	
	%RSD	Avg RF	(ppb)	%RSD		%RSD	Avg RF	(ppb)	%RSD
Carbon Disulfide	11.44	1.37	0.13	7.58	1,1,2-Trichloroethane	5.85	0.28	0.1	7.62
1,1,2-Trichlorotrifluoroethane	11.62	0.3	0.12	8.43	Ethylmethacrylate	7.87	0.63	0.07	4.96
Iodomethane	*0.99		0.18	5.47	Dibromochloromethane	10.02	0.32	0.06	4.62
Allyl Chloride	6.87	0.76	0.16	12.55	1,3-Dichloropropane	5.44	0.62	0.07	5.63
Methylene Chloride	4.91	0.63	0.09	6.95	1,2-Dibromoethane (EDB)	5.5	0.36	0.04	2.9
Methyl Acetate	9.29	0.92	0.11	7.54	Butyl Acetate	8.26	0.91	0.06	4.56
trans-1,2-Dichloroethene	8.33	0.64	0.06	4.27	2-Hexanone	4.2	0.67	0.04	2.94
Acetone	13.63	0.36	0.22	15.08	Ethylbenzene	4.99	1.42	0.07	4.26
Methyl-tert-butyl-Ether (MTBE)	7.49	1.82	0.05	3.23	Chlorobenzene	5.09	0.92	0.07	5.06
tert-Butyl Alcohol	9.37	1.09	0.11	8.49	Chlorobenzene-d5 (IS)	3.09			
Acetonitrile	8.79	0.19	0.28	10.66	1,1,1,2-Tetrachloroethane	9.76	0.81	0.06	4.48
Chloroprene	10.77	0.7	0.04	2.9	m,p-Xylene	5.83	1.18	**0.14	4.79
1,1-Dichloroethane	9.96	0.92	0.06	4.77	o-Xylene	4.99	1.24	0.06	4.14
Acrylonitrile	9.48	0.42	0.12	9.68	Styrene	5.79	1.09	0.07	5.14
Ethyl Acetate	14.24	0.04	0.15	12.8	Bromoform	12.88	0.26	0.1	7.58
Ethyl-tert-Butyl-Ether (ETBE)	8.67	1.69	0.06	4.53	Isopropylbenzene	6.72	1.39	0.07	4.75
Isobutanol	6.28	0.74	0.04	5.42	Amyl acetate	10.54	0.81	0.06	4.68
Isopropyl acetate	6.3	0.73	0.03	5.27	4-Bromofluorobenzene (Surr)	2.31	0.53		
cis-1,2-Dichloroethene	7.33	0.69	0.07	5.32	n Propylbenzene	7.33	1.6	0.1	6.75
2,2-Dichloropropane	6.5	0.69	0.11	9.28	Bromobenzene	6.52	0.86	0.07	4.88
Bromochloromethane	10.29	0.48	0.08	5.75	1,1,2,2-Tetrachloroethane	6.11	0.53	0.05	4.82
Chloroform	6.38	0.82	0.05	3.63	2-Chlorotoluene	6.47	1.19	0.09	6.31
Carbon Tetrachloride	11.44	0.46	0.12	9.66	1,2,3-Trichloropropane	6.31	0.52	0.09	6.39
Tetrahydrofuran	*0.99		0.07	3.12	trans-1,4-Dichloro-2-Butene	9.25	0.93	0.05	3.95
Vinyl Acetate	9.76	1.23	0.08	6.09	4-Chlorotoluene	3.26	3.41	0.26	18.6
1,1,1-Trichloroethane	9.83	0.62	0.09	6.9	tert-Butylbenzene	5.58	3.41	0.1	7.32
Dibromofluoromethane (Surr)	1.82	0.5			Pentachloroethane	*0.98		0.18	-7.93
2-Butanone (MEK)	7.38	0.43	0.07	5.05	1,2,4-Trimethylbenzene	5.67	3.91	0.07	4.36
1,1-Dichloropropene	9.2	0.65	0.14	9.6	sec-Butylbenzene	7.68	4.54	0.08	5.22
Benzene	5.14	1.36	0.07	5.08	p-Isopropyltoluene	7.4	3.84	0.1	6.48
Propionitrile	13.15	0.2	0.2	16.09	1,3-Dichlorobenzene	2.6	2.26	0.11	6.93

Table 1. Calibration and MDL results (continued).

Compound	Calibration		MDL		Compound	Calibration		MDL	
	%RSD	Avg RF	(ppb)	%RSD		%RSD	Avg RF	(ppb)	%RSD
Pentafluorobenzene (IS)	2.86				1,4-Dichlorobenzene	2.59	2.28	0.06	3.68
tert-Amyl Methyl Ether (TAME)	4.91	1.84	0.14	9.2	1,4-Dichlorobenzene-d4 (IS)	4.48			
1,2-Dichloroethane	8.44	0.41	0.03	2.36	n-Butylbenzene	9.74	3.3	0.1	5.9
Propyl acetate	8.95	0.94	0.04	3.29	Nitrobenzene	*0.98		0.82	-6.92
Trichloroethene	6.98	0.33	0.09	5.79	1,2-Dibromo-3-chloropropane (DBCP)	6.17	0.7	0.22	13.73
1,4-Difluorobenzene (IS)	3.35				1,2-Dichlorobenzene	3.89	2.21	0.08	5.16
Dibromomethane	6.85	0.19	0.07	5.9	Hexachlorobutadiene	8.87	0.24	0.1	6.87
1,2-Dichloropropane	5.46	0.35	0.12	9.22	1,2,4-Trichlorobenzene	7.35	1.46	0.16	9.31
Bromodichloromethane	8.24	0.37	0.08	6.47	Naphthalene	9.38	5.33	0.1	7.23
Methyl Methacrylate	11	0.74	0.06	4.44	1,2,3 Trichlorobenzene	6.92	1.45	0.08	4.78

*Denotes r^2 value of weighted quadratic calibration; **denotes MDL calculated at 1 ppb.

Conclusions

Calibrations meeting the criteria of U.S. EPA method 8260C were achieved in all but two compounds tested, representing a failure rate of 0.02%, well below the limit of 10% for method validation. Excellent sensitivity was obtained for the target analytes listed.

The system including a Helium Saver Module combined with the Atomx system nitrogen purge gas inlet provides a substantial decrease in helium use while providing a platform that continues to meet the needs of analysts utilizing U.S. EPA Method 8260C.

www.thermofisher.com

©2016 Thermo Fisher Scientific Inc. All rights reserved. All other trademarks are the property of Thermo Fisher Scientific and its subsidiaries. This information is presented as an example of the capabilities of Thermo Fisher Scientific products. It is not intended to encourage use of these products in any manners that might infringe the intellectual property rights of others. Specifications, terms and pricing are subject to change. Not all products are available in all countries. Please consult your local sales representative for details.

Africa +43 1 333 50 34 0
Australia +61 3 9757 4300
Austria +43 810 282 206
Belgium +32 53 73 42 41
Canada +1 800 530 8447
China 800 810 5118 (free call domestic)
 400 650 5118

Denmark +45 70 23 62 60
Europe-Other +43 1 333 50 34 0
Finland +358 9 3291 0200
France +33 1 60 92 48 00
Germany +49 6103 408 1014
India +91 22 6742 9494
Italy +39 02 950 591

Japan +81 45 453 9100
Korea +82 2 3420 8600
Latin America +1 561 688 8700
Middle East +43 1 333 50 34 0
Netherlands +31 76 579 55 55
New Zealand +64 9 980 6700
Norway +46 8 556 468 00

Russia/CIS +43 1 333 50 34 0
Singapore +65 6289 1190
Spain +34 914 845 965
Sweden +46 8 556 468 00
Switzerland +41 61 716 77 00
UK +44 1442 233555
USA +1 800 532 4752

Thermo
 SCIENTIFIC

A Thermo Fisher Scientific Brand