

Innovation Applied

Analysis of Synthetic Cannabinoids (Spice) in Urine Utilizing HRAM

Kristine Van Natta
Thermo Fisher Scientific

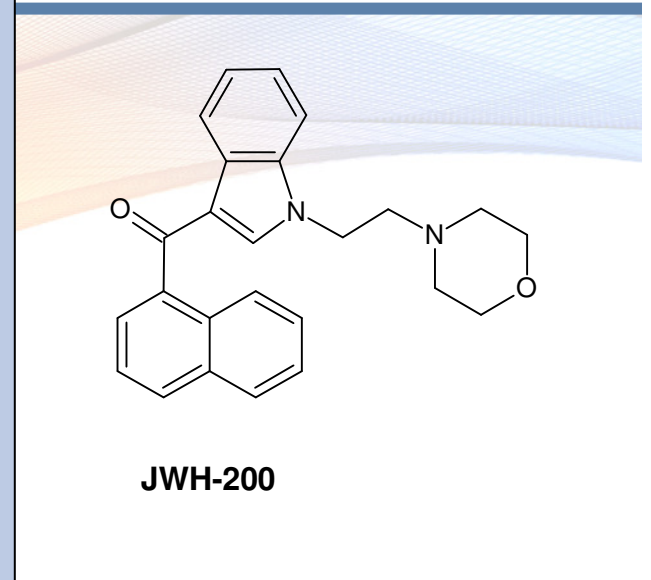
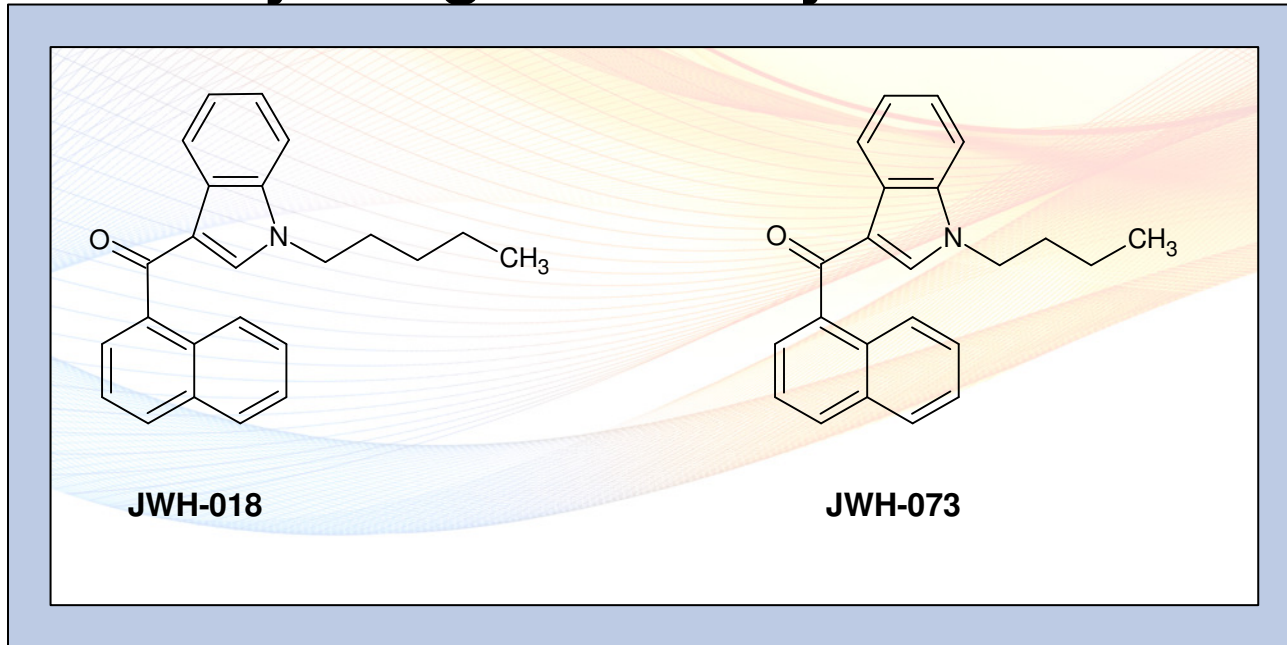
Forensic Toxicology use Only

History of Synthetic Cannabinoids

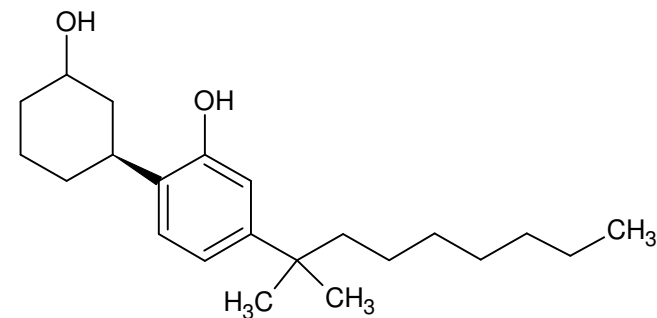
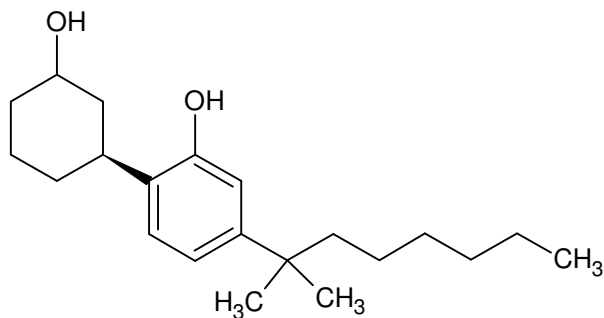
- Originally made for research in 1980s.
- Around 2008, they have found their way into the designer drug markets as a “legal high.”
- Sprayed onto herbal products as “incense” and go by the names Spice and K2.
- DEA has recently regulated five as Schedule I compounds.
- JWH-018, JWH-073, JWH-200, CP-47,497, and CP-47,497-C8 homolog (cannabicyclohexanol)



Newly Regulated Synthetic Cannabinoids



Sobolevsky et al./Forensic Science International 200 (2010) 141-147

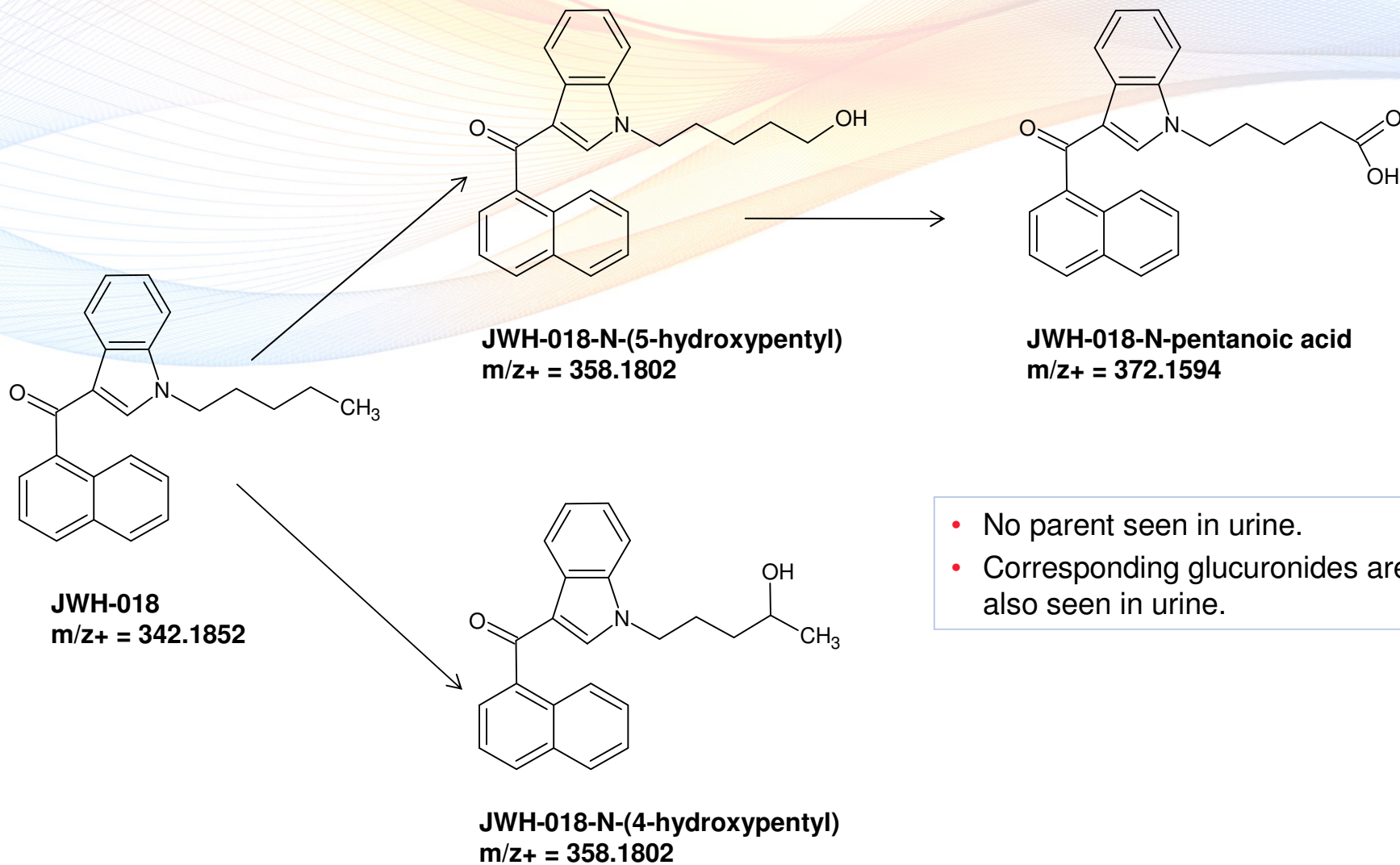


Analytical Approaches – What to look for?

- Human liver microsomal incubations...
- ...used as a starting point to screen human urine.
- Metabolism screening software

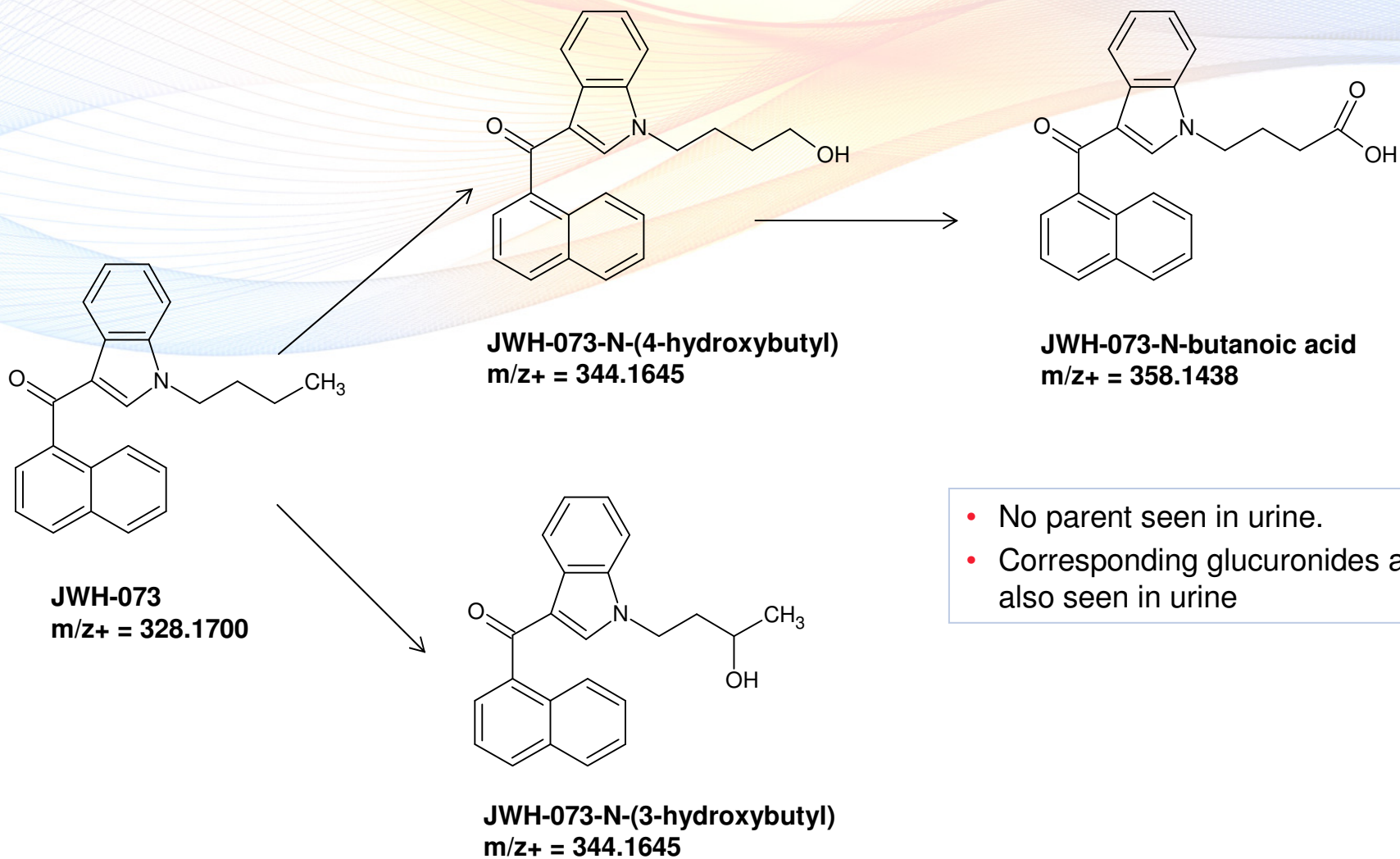
- What has been found (so far)...

Structures and Metabolism JWH-018



- No parent seen in urine.
- Corresponding glucuronides are also seen in urine.

Structures and Metabolism JWH-073



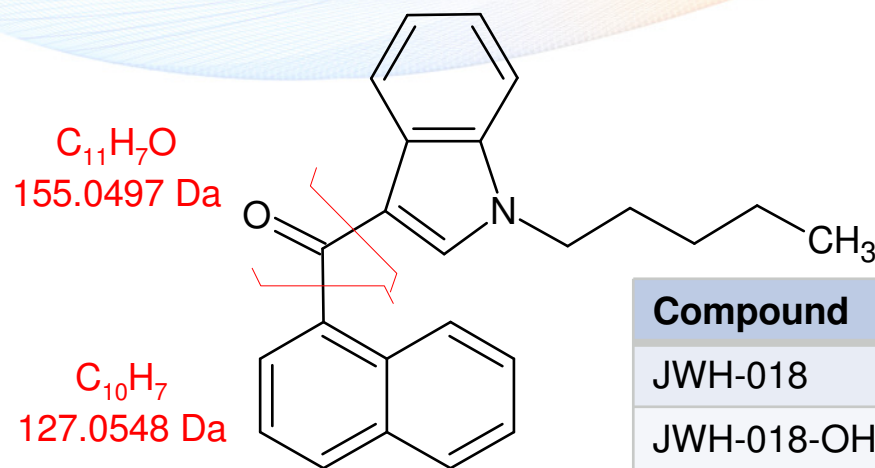
Forensic Toxicology use Only



LC- MS Analytical Approaches

Analytical Challenges in JWH analysis

- Compounds have same fragments
- Two key metabolites have identical SRM's.
- Must be separated chromatography.
- The same metabolites have different exact mass (Δ by 100 ppm)
- Additional chromatographic challenge of Ω and (Ω -1) alkyl-OHs.



Compound	Formula	Exact m/z+	SRM-1	SRM-2
JWH-018	C ₂₄ H ₂₃ N O	342.1852	127.04	155.04
JWH-018-OH	C ₂₄ H ₂₃ N O ₂	358.1802	127.04	155.04
JWH-018-COOH	C ₂₄ H ₂₁ N O ₃	372.1594	127.04	155.04
JWH-073	C ₂₃ H ₂₁ N O	328.1700	127.04	155.04
JWH-073-OH	C ₂₃ H ₂₁ N O ₂	344.1645	127.04	155.04
JWH-073-COOH	C ₂₃ H ₁₉ N O ₃	358.1438	127.04	155.04

Forensic Toxicology use Only

Method Development/Validation

- Separation of JWH-018-OH and JWH-073-COOH
- Separation of Ω and (Ω -1) -OHs
- Check for glucuronides and hydrolysis conditions.
- Check for matrix effects.
- Precision/accuracy/LOQ/carryover/linearity (the usual suspects).

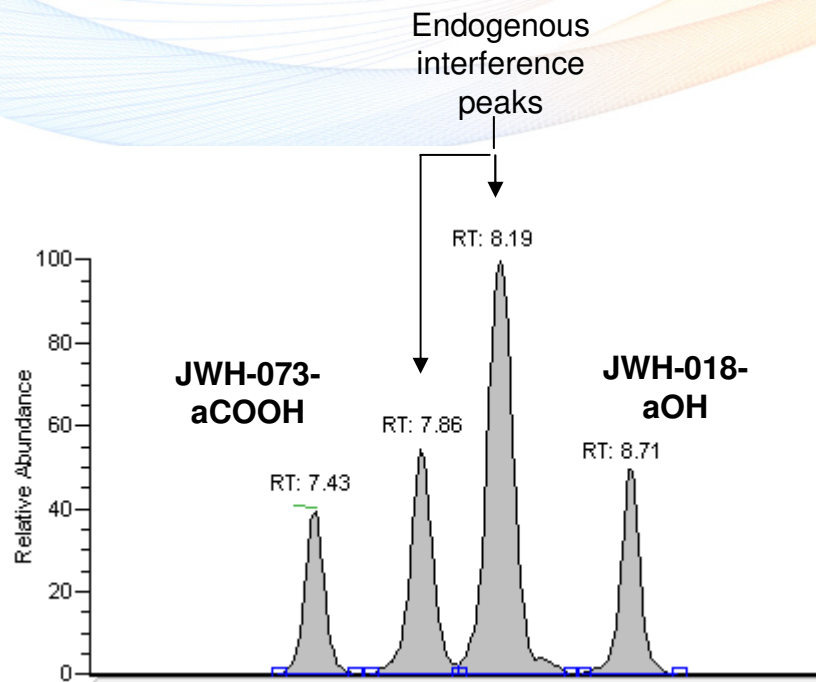
Sample Processing Method

- Aliquot of urine
- Add IS and β -glucuronidase enzyme
- Incubate, quench, centrifuge, dilute supernatant and inject

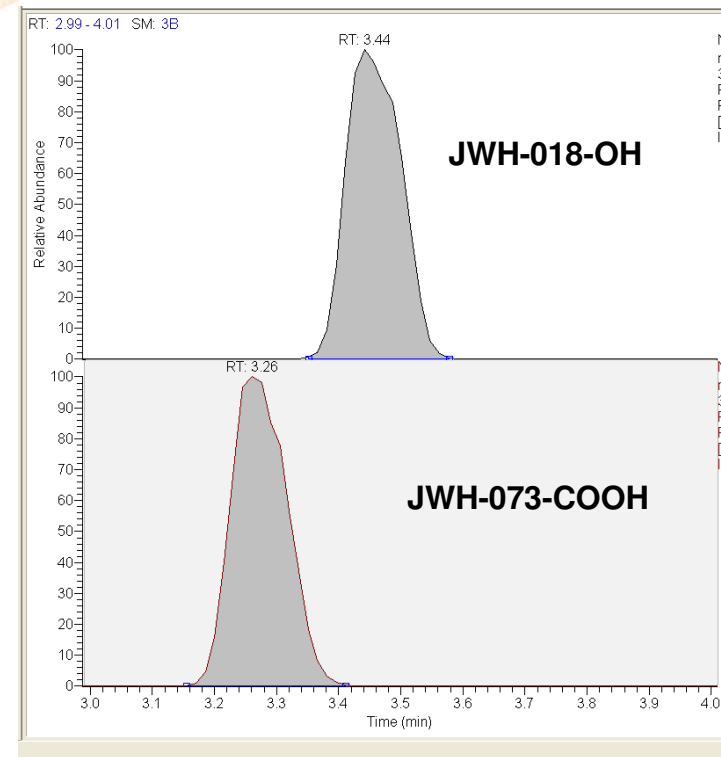
Separation of 018-OH and 073-COOH

HRAM analysis time 3X faster than SRM

Triple Quadrupole



HRAM



Forensic Toxicology use Only

Exactive Data Acquisition Method

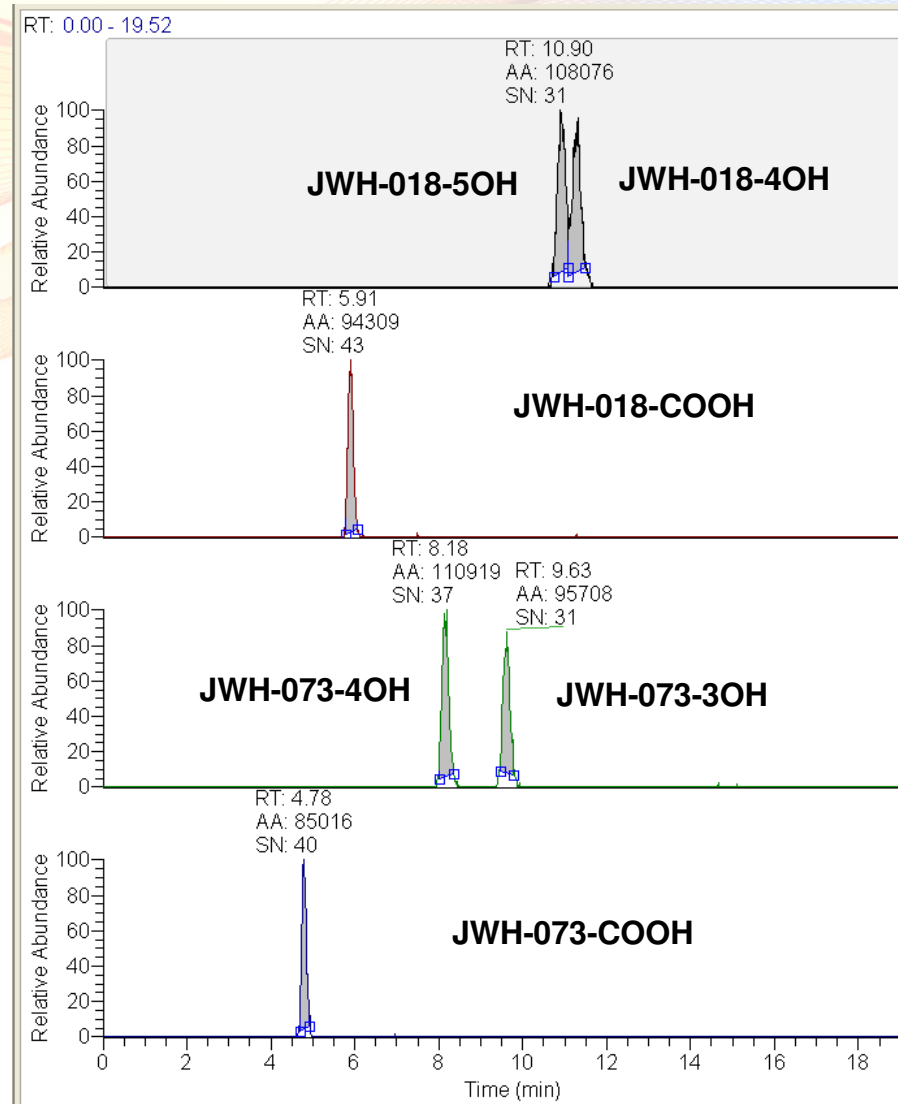
- HESI Source
- 2 Scan Events
 - Event 1
 - Full Scan
 - Mass Range m/z + 300-2000
 - Resolution 50,000
 - Event 2
 - HCD Fragmentation
 - Collision Energy = 30
 - Mass Range m/z + 50-1000
 - Resolution 25,000

Best separation of Ω and (Ω -1) hydroxies

- JWH-073-OH separate easily.
- JWH-018-OH are difficult to separate.

Column:
Hypersil GOLD aQ, 1.9 μ m particle,
100x2.1 mm

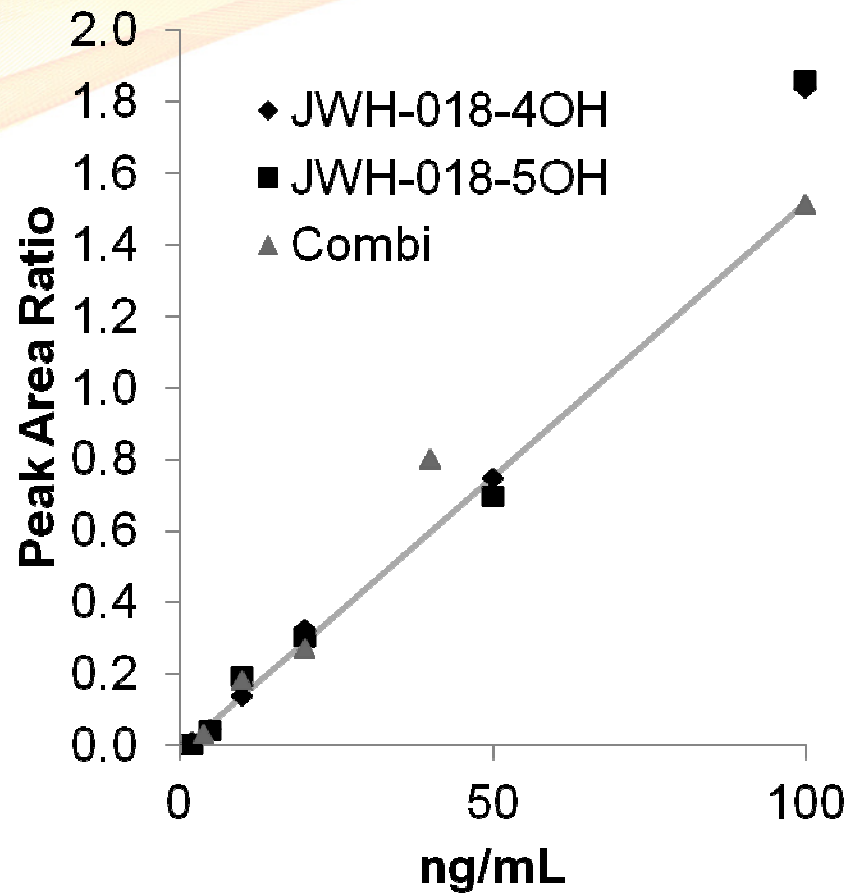
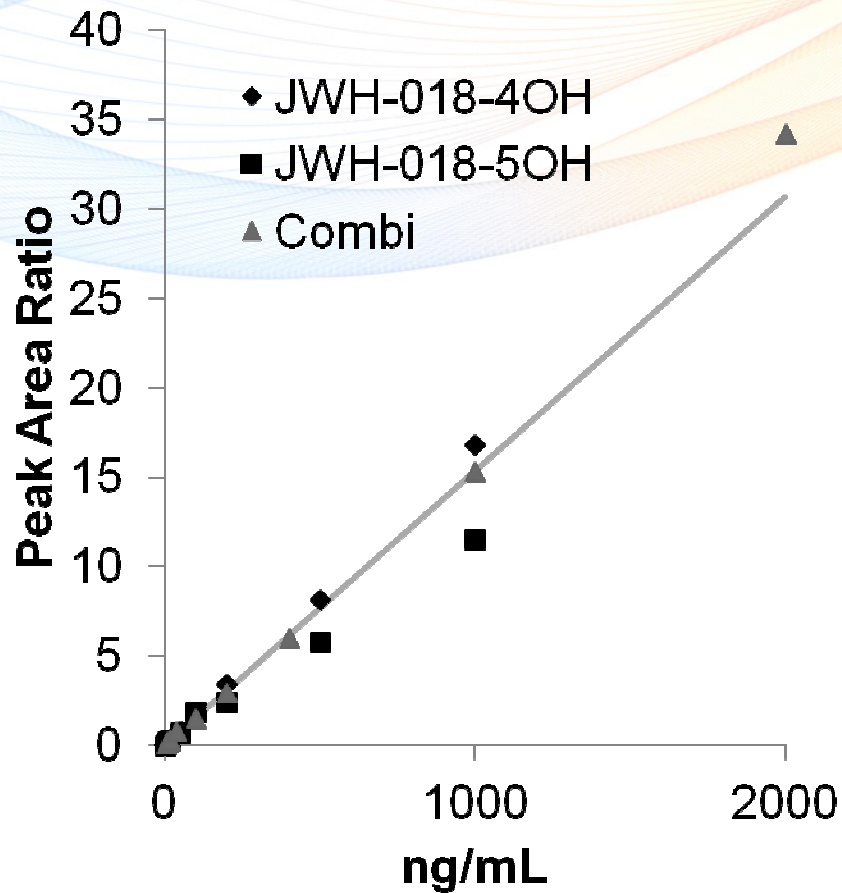
LC Conditions:
5 mM NH_4COOH
Isocratic at 55% methanol



Forensic Toxicology use Only

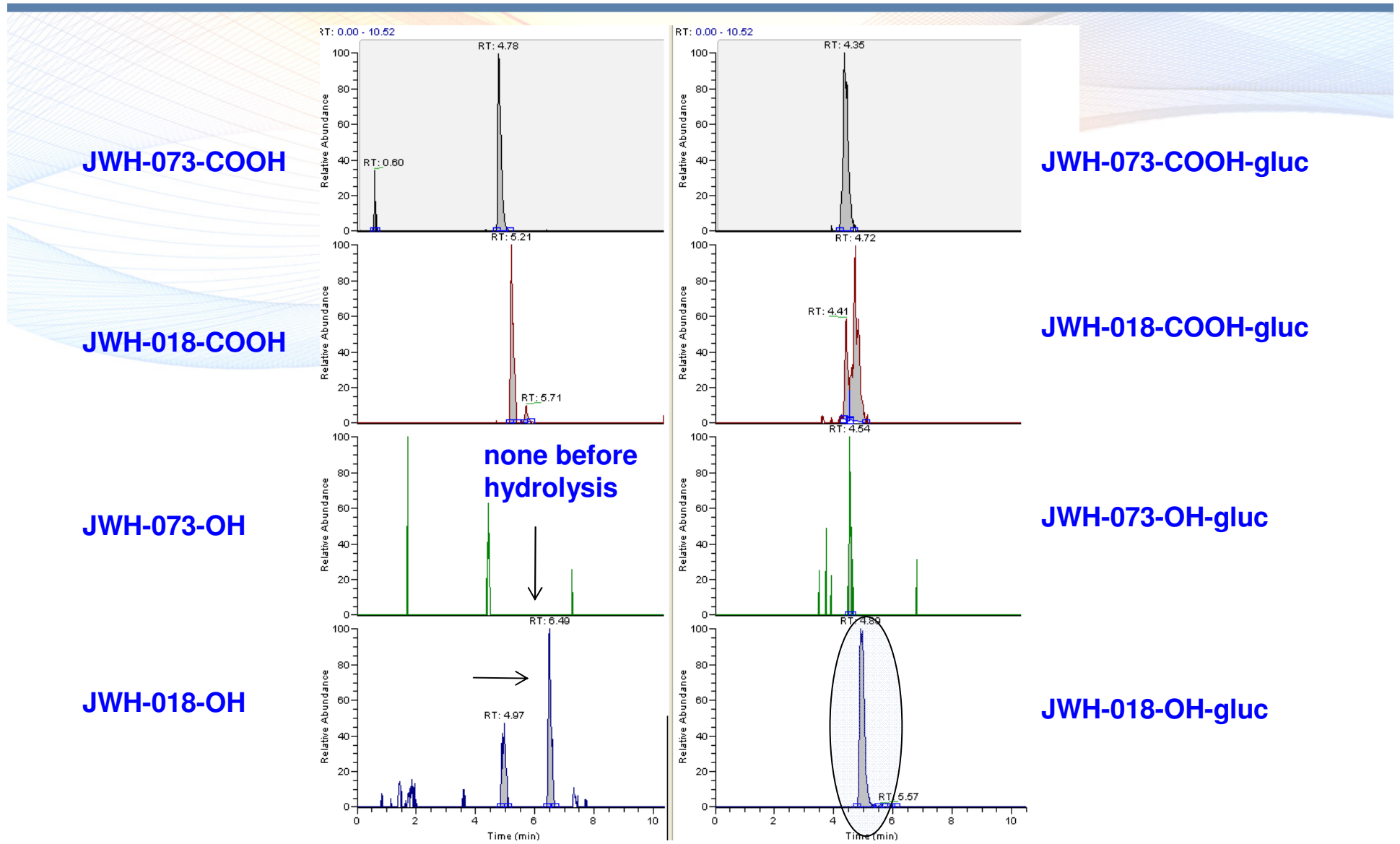
Equivalence of JWH-018-OHs

Individual OHs back calculated to within 30% on combination curve



Forensic Toxicology use Only

Do we have glucuronides?



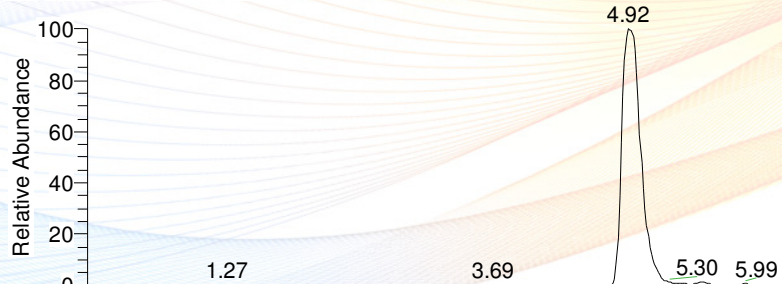
Forensic Toxicology use Only

Confirmation of JWH-018-OH-glucuronide

F3-no_enzyme
aQ 3um, 100x2.1 mm, HCD 30 tight

9/23/2011 9:49:36 AM

RT: 0.00 - 10.52 SM: 5B



JWH-018-OH-gluc
m/z+ = 534.2122

NL: 2.59E5
m/z= 534.2106-534.2138
F: FTMS {1,1} + p ESI Full
ms [300.00-2000.00] MS
F3-no_enzyme

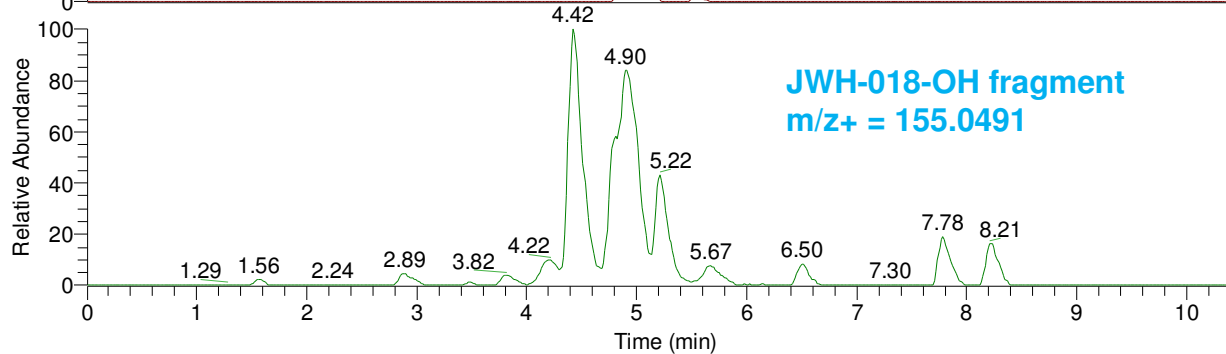
Full Scan event



JWH-018-OH
m/z+ = 358.1802

NL: 5.91E4
m/z= 358.1791-358.1813
F: FTMS {1,2} + p ESI Full
ms2 1000.00@hcd30.00
[50.00-1000.00] MS
F3-no_enzyme

HCD Fragmentation Event



JWH-018-OH fragment
m/z+ = 155.0491

NL: 5.80E4
m/z= 155.0486-155.0496
F: FTMS {1,2} + p ESI Full
ms2 1000.00@hcd30.00
[50.00-1000.00] MS
F3-no_enzyme

HCD Fragmentation Event

Forensic Toxicology use Only

Testing Hydrolysis Methods

Urine + IS

(1)
Buffer,
1 h @ 60°C

(2)
Buffer,
14 h @ 60°C

(3)
 β -glucuronidase,
1 h @ 60°C

(4)
 β -glucuronidase,
14 h @ 60°C

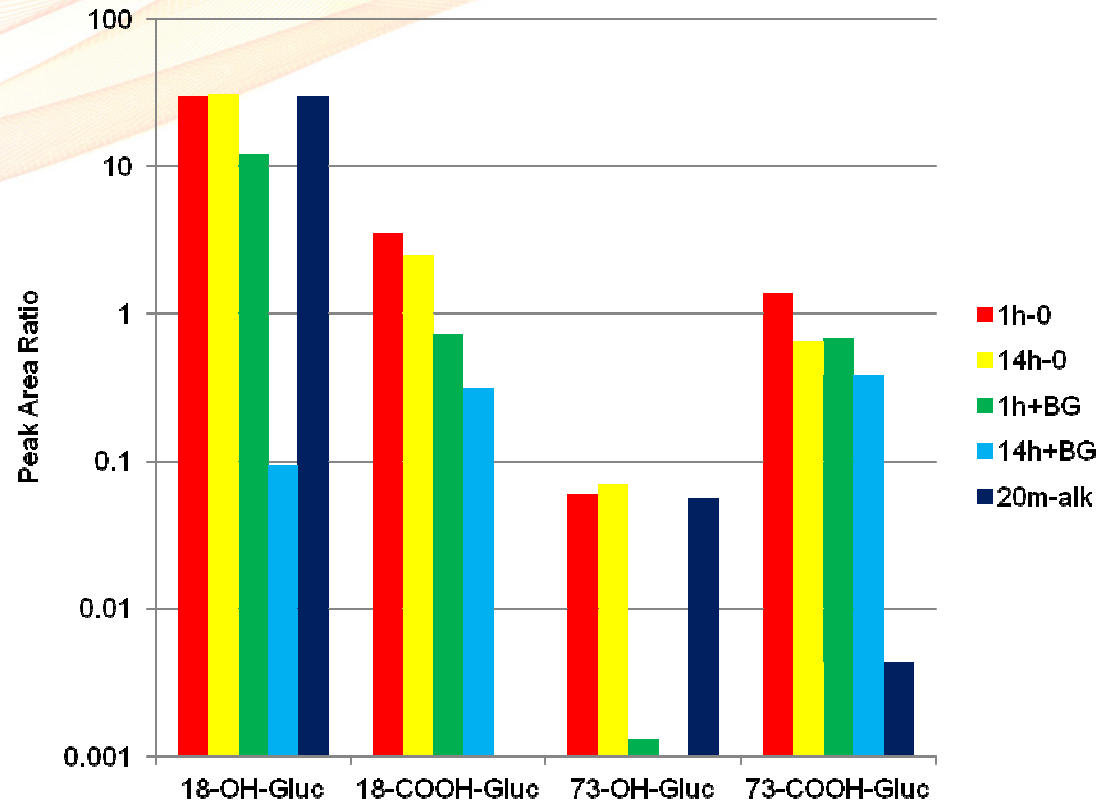
(5)
NaOH,
20 min 60°C,
glacial acetic
acid

quench
centrifuge,
dilute,
inject

Differing hydrolysis susceptibility

Glucuronide
(Peak Area Ratio)

	Enzyme	Basic
-OH-gluc	++	—
-COOH-gluc	+	+++

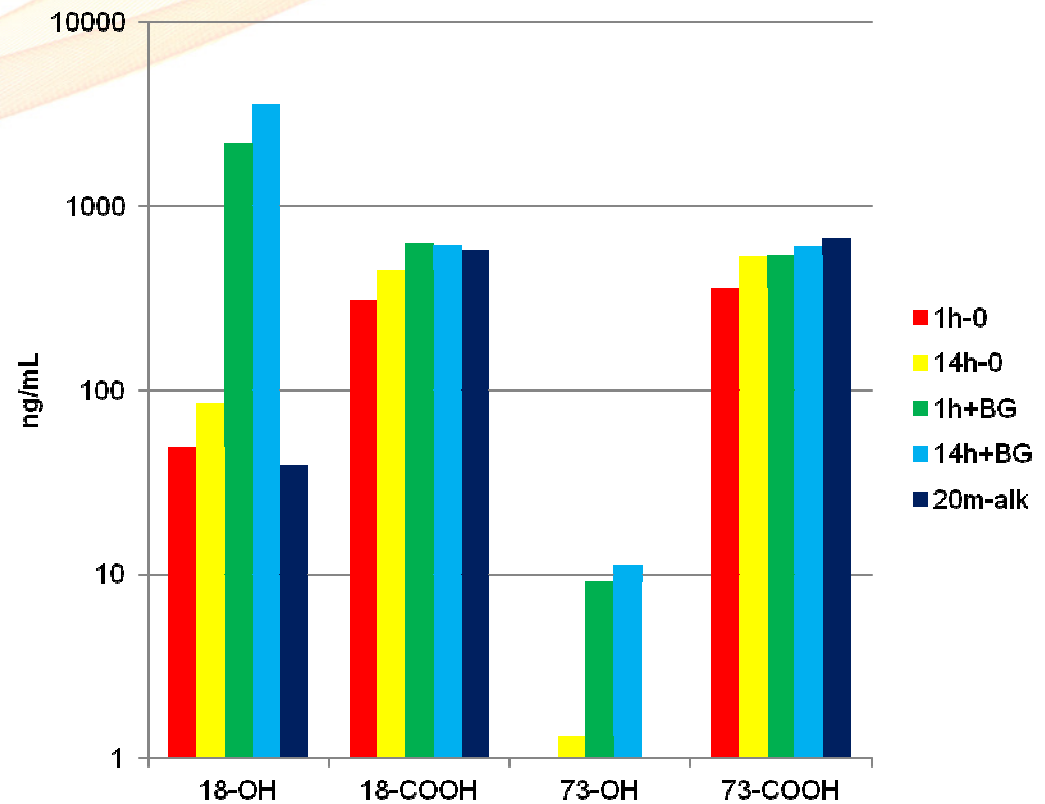


Forensic Toxicology use Only

Appearance of Free Metabolite

Free Metabolite (ng/mL)

	Enzyme	Basic
-OH	++	—
-COOH	++	++



Forensic Toxicology use Only

IS Peak Area Compared to Standard Curve

No matrix effects

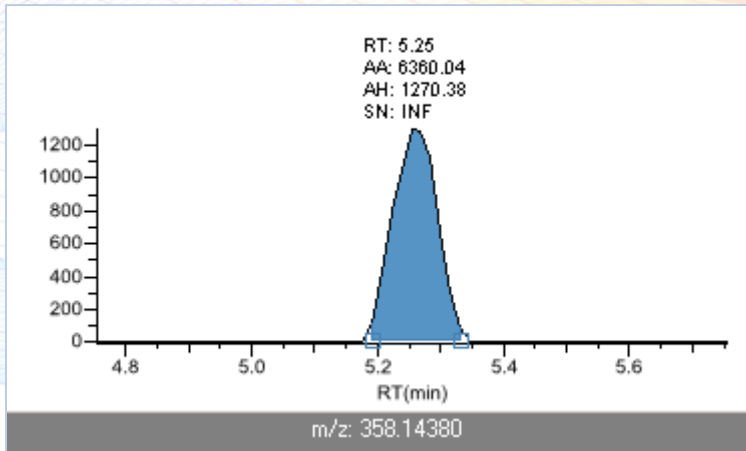
Sample	JWH-073-COOH-d5	JWH-018-COOH-d4	JWH-073-3OH-d5	JWH-018-4OH-d4
F1	104%	106%	108%	95.2%
F2	114%	116%	108%	112%
F3	92.5%	87.8%	99.2%	105%
F4	101%	108%	100%	108%
F5	102%	103%	102%	98.1%
F6	109%	103%	105%	95.9%
F7	93.2%	100%	97.8%	92.9%
F8	104%	116%	108%	101%

Method Validation Results

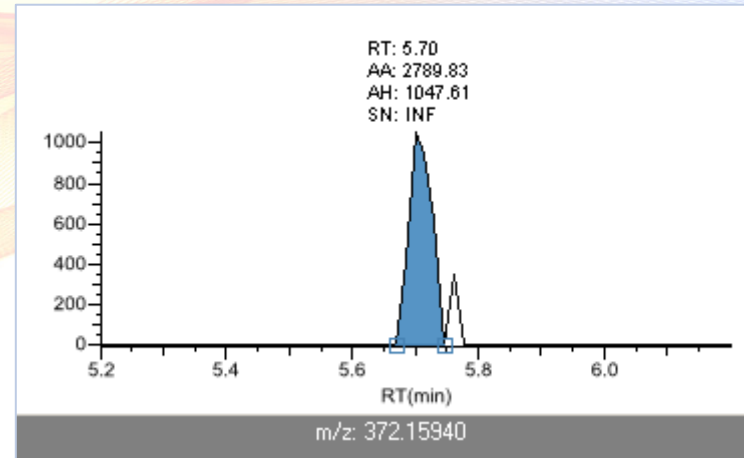
- LQC Inter-Assay accuracy and precision within 20%
- HQC Inter-Assay accuracy and precision both within 10%
- LOQ 2-5 ng/mL for all compounds.
- Linear to 1000 ng/mL, 1/x weighting
- No carryover seen in blank injected after high QC sample

Chromatograms at 5 ng/mL

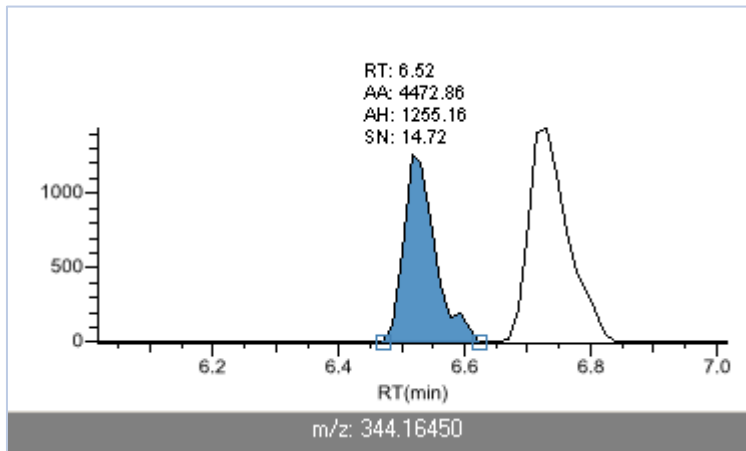
JWH-073-COOH



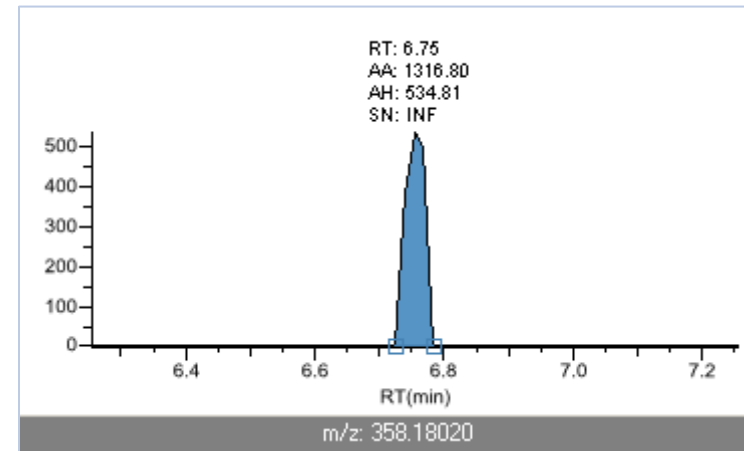
JWH-018-COOH



JWH-073-OH



JWH-018-OH



Forensic Toxicology use Only

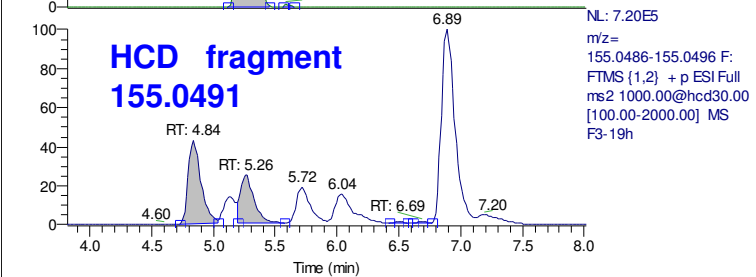
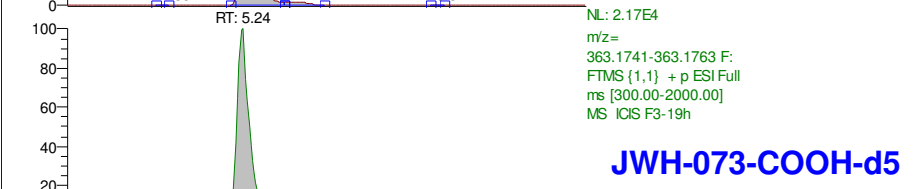
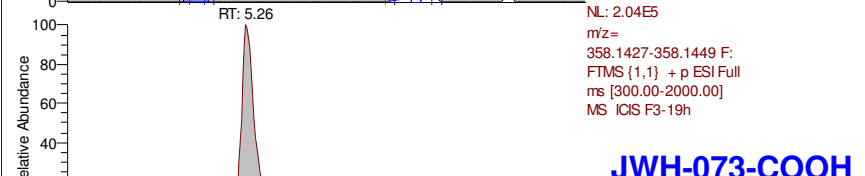
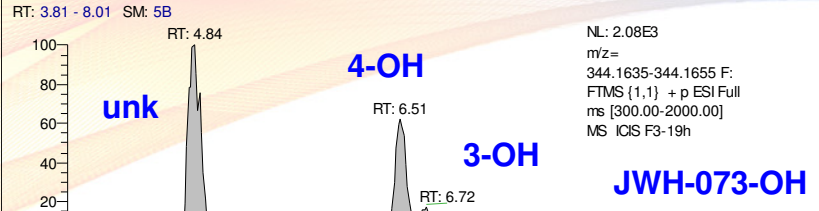
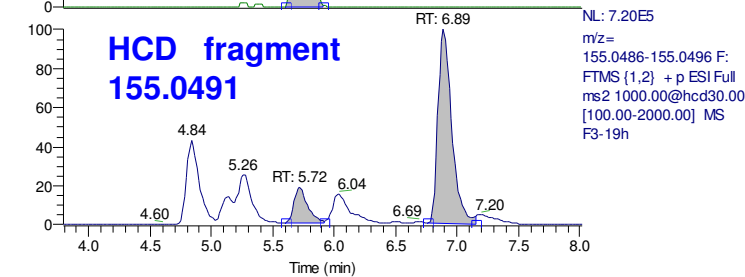
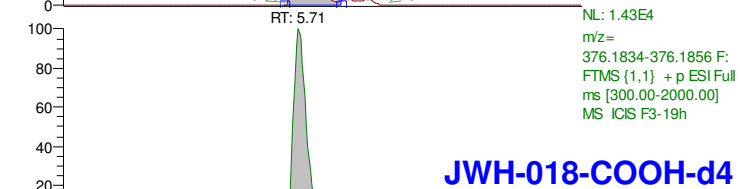
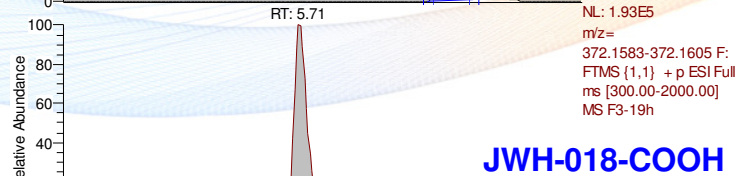
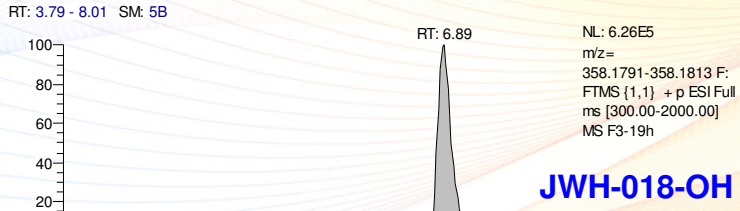
Results of self confessed consumption samples

ng/mL	JWH-073-COOH	JWH-018-COOH	JWH-073-3OH	JWH-073-4OH	JWH-018-OH
F1	2.26	2.59	ND	ND	10.2
F2	22.9	19.4	ND	ND	63.6
F3	724	552	2.67	6.78	3370
F4	ND	ND	ND	ND	10.8
F5	ND	ND	ND	ND	ND
F6	ND	ND	ND	ND	ND
F7	ND	ND	ND	ND	ND
F8	2.25	3.93	ND	ND	4.04

Sample F3 showing HCD fragment confirmation

C:\Thermo\...\20110915_V1\Data\F3-19h
processed 15Sep2011, inj 19 Sep2011, Exactive

9/19/2011 10:38:13 AM

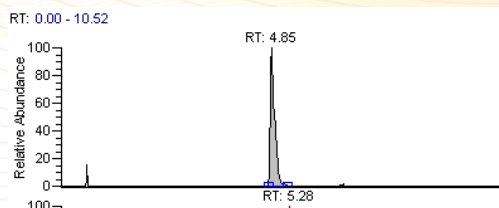


Forensic Toxicology use Only

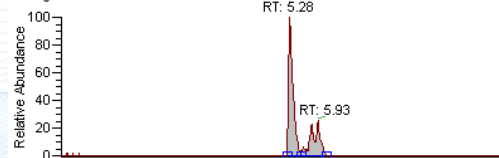
Retrospective Analysis

Putative identification of other metabolites

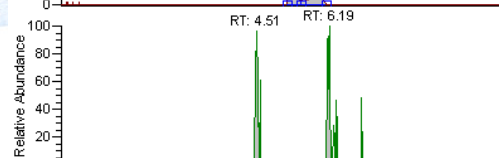
JWH-073-COOH



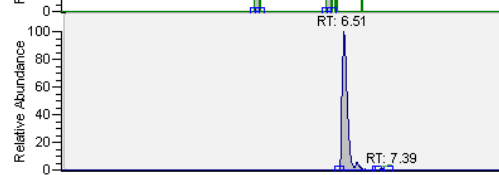
JWH-018-COOH



JWH-073-OH



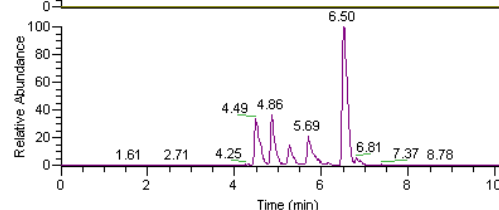
JWH-018-OH



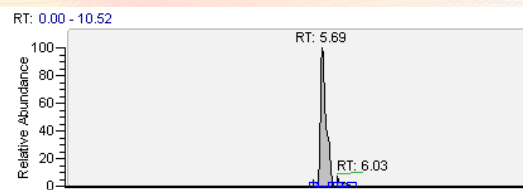
JWH-des-alkyl



HCD 155.0491



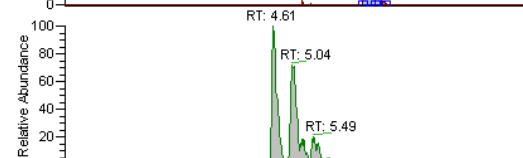
JWH-018-di-OH



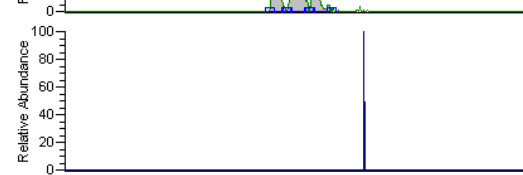
JWH-018-di-OH+2H



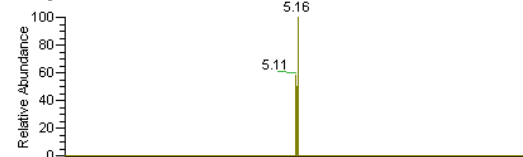
JWH-018-tri-OH+2H



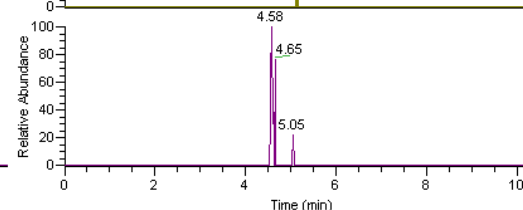
JWH-073-di-OH



JWH-073-di-OH+2H



JWH-073-tri-OH+2H



Forensic Toxicology use Only

Summary

- Newly scheduled synthetic cannabinoids need to be analyzed.
- Look for Ω - and (Ω -1)-alkyl-OH and alkyl-COOH in urine
- Analytical challenges due to identical fragments, isobaric nominal masses and isomeric metabolites.
 - Chromatography must be used to separate isomers
 - Equivalent detector response for W/(W-1) isomers
- Faster analysis by HRAM when Ω and (Ω -1) don't need to be separated
- -OH and -COOH respond differently to hydrolysis conditions
- Good precision, accuracy, linearity, carryover and no matrix effects

Acknowledgements

- Marta Kozak, Thermo Fisher Scientific
- Kent Johnson, Pacific Hospital of Long Beach (Fortes Laboratories)
- Robert Hara, Fortes Laboratories
- Cerilliant