

# HOW TO BACK UP A SEQUENCE

1. Select the sequence you want to backup by enlightening it.

The screenshot displays the Chromleon Console interface. On the left, the 'Data' tree shows a folder named 'AS18 - Essais 27112011' which is highlighted with a red arrow. The main window shows a table of 21 runs, all of which are 'Blank' and have a status of 'Finished'. A red arrow points from the 'AS18 - Essais 27112011' folder in the left pane to the first row of the table. Below the table, the 'Associated Items' section lists various items related to the selected sequence.

#	CD	Name	Type	Level	Position	Volume [µl]	Instrument Method	Processing Method	Status
1		Blank	Blank		RA1	25.0	Anions Communs avec AS18	New ProcMethod(1)	Finished
2		Blank	Blank		RA1	25.0	Anions Communs avec AS18	New ProcMethod(1)	Finished
3		Blank	Blank		RA1	25.0	Anions Communs avec AS18	New ProcMethod(1)	Finished
4		Blank	Blank		RA1	25.0	Anions Communs avec AS18	New ProcMethod(1)	Finished
5		Blank	Blank		RA1	25.0	Anions Communs avec AS18	New ProcMethod(1)	Finished
6		Blank	Blank		RA1	25.0	Anions Communs avec AS18	New ProcMethod(1)	Finished
7		Blank	Blank		RA1	25.0	Anions Communs avec AS18	New ProcMethod(1)	Finished
8		Blank	Blank		RA1	25.0	Anions Communs avec AS18	New ProcMethod(1)	Finished
9		Blank	Blank		RA1	25.0	Anions Communs avec AS18	New ProcMethod(1)	Finished
10		Blank	Blank		RA1	25.0	Anions Communs avec AS18	New ProcMethod(1)	Finished
11		Blank	Blank		RA1	25.0	Anions Communs avec AS18	New ProcMethod(1)	Finished
12		Blank	Blank		RA1	25.0	Anions Communs avec AS18	New ProcMethod(1)	Finished
13		Blank	Blank		RA1	25.0	Anions Communs avec AS18	New ProcMethod(1)	Finished
14		Blank	Blank		RA1	25.0	Anions Communs avec AS18	New ProcMethod(1)	Finished
15		Blank	Blank		RA1	25.0	Anions Communs avec AS18	New ProcMethod(1)	Finished
16		Blank	Blank		RA1	25.0	Anions Communs avec AS18	New ProcMethod(1)	Finished
17		Blank	Blank		RA1	25.0	Anions Communs avec AS18	New ProcMethod(1)	Finished
18		Blank	Blank		RA1	25.0	Anions Communs avec AS18	New ProcMethod(1)	Finished
19		Blank	Blank		RA1	25.0	Anions Communs avec AS18	New ProcMethod(1)	Finished
20		Blank	Blank		RA1	25.0	Anions Communs avec AS18	New ProcMethod(1)	Finished
21		Blank	Blank		RA1	25.0	Anions Communs avec AS18	New ProcMethod(1)	Finished

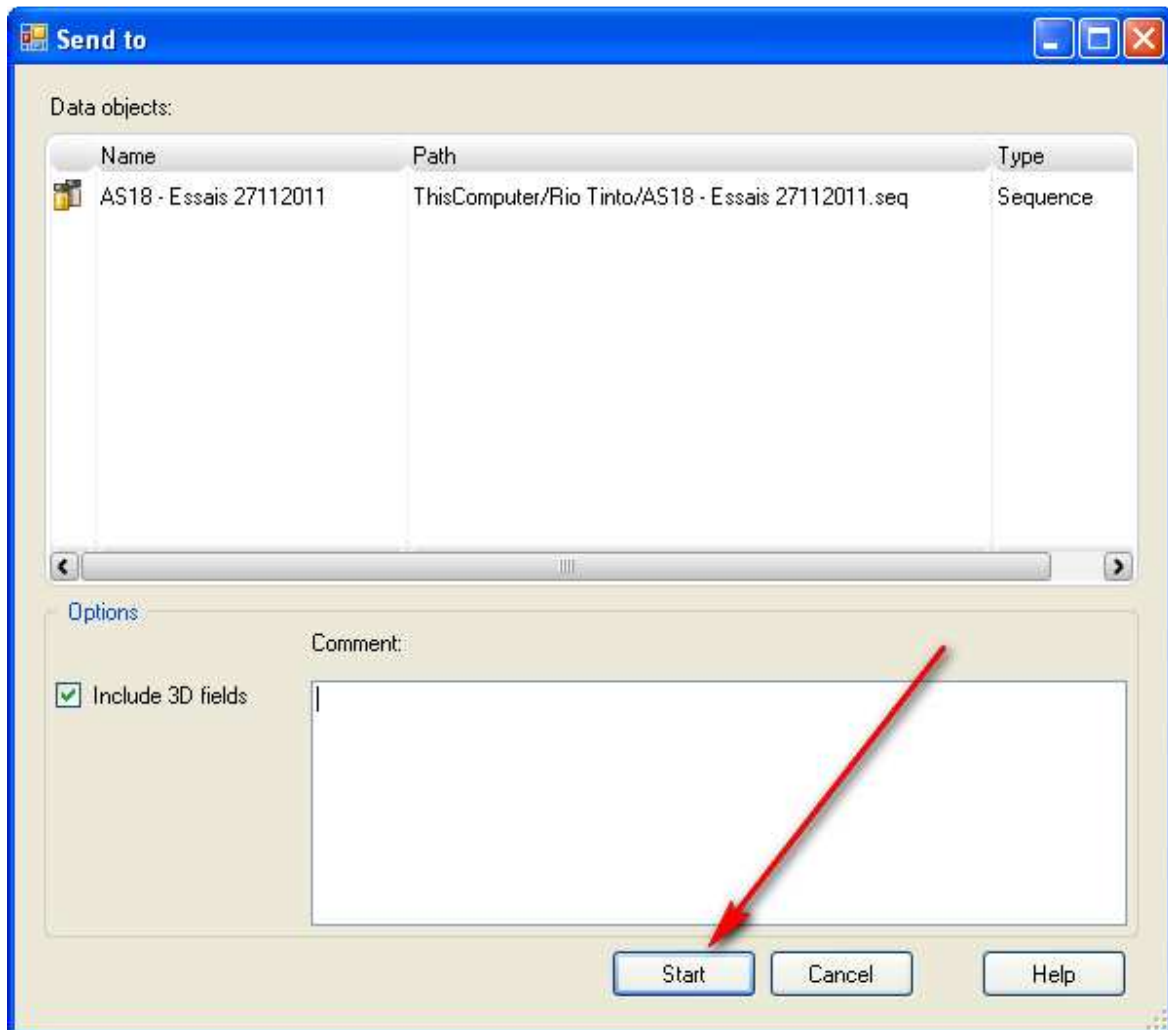
Name	Type	Date Modified	Comment
Anions Communs avec AS18	Processing Method	2011-10-31 11:49	
Anions Communs avec AS18	Instrument Method	2011-10-31 11:49	Anions communs par gradient
Anions Communs avec AS18	Report Template	2011-10-31 11:49	
Chlorure	Instrument Method	2011-10-31 11:49	Anions communs par gradient
Default	View Settings	2011-10-31 12:06	

2. Select *File* (A) and then *Send to...* (B)

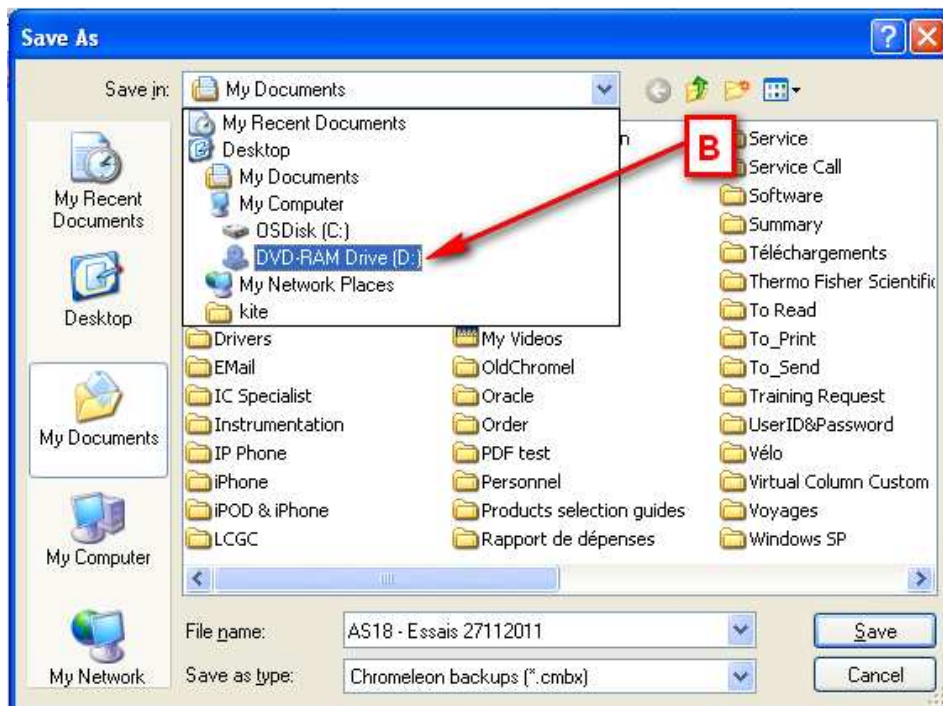
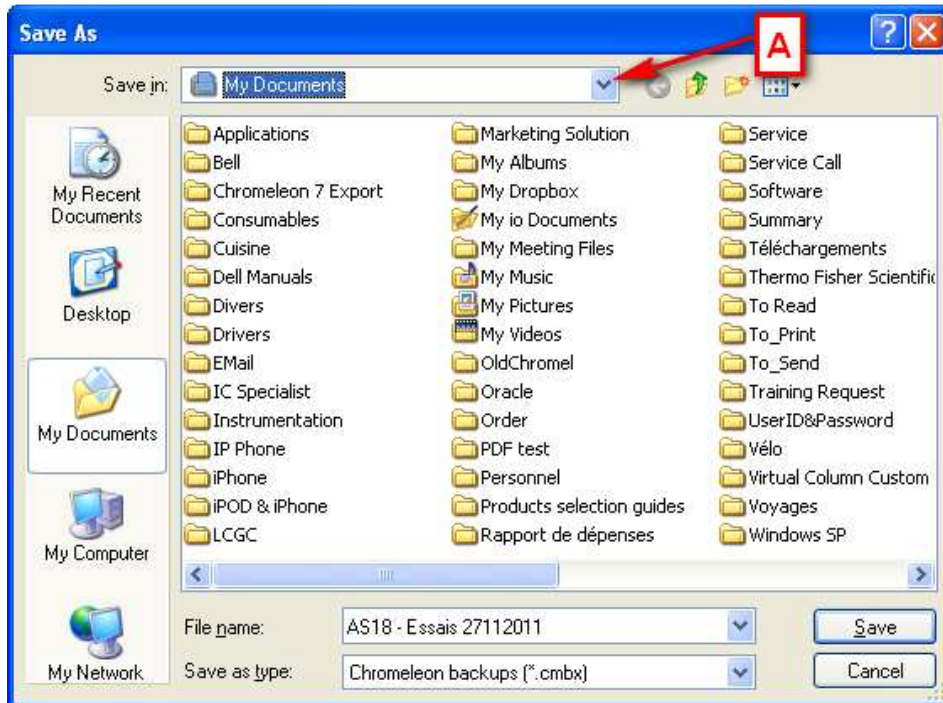
The screenshot displays the Chromeleon Console software interface. The 'File' menu is open, with 'Send To...' selected. Red arrows labeled 'A' and 'B' point to the 'File' menu and the 'Send To...' option, respectively. The main window shows a 'Run Finished' status and a table of data. The table has columns for '#', 'CD\_1', 'Name', and 'Type'. The 'Name' column contains 'Blank' for all 21 rows, and the 'Type' column also contains 'Blank'. Each row includes a small waveform icon in the 'CD\_1' column.

#	CD_1	Name	Type
1		Blank	Blank
2		Blank	Blank
3		Blank	Blank
4		Blank	Blank
5		Blank	Blank
6		Blank	Blank
7		Blank	Blank
8		Blank	Blank
9		Blank	Blank
10		Blank	Blank
11		Blank	Blank
12		Blank	Blank
13		Blank	Blank
14		Blank	Blank
15		Blank	Blank
16		Blank	Blank
17		Blank	Blank
18		Blank	Blank
19		Blank	Blank
20		Blank	Blank
21		Blank	Blank

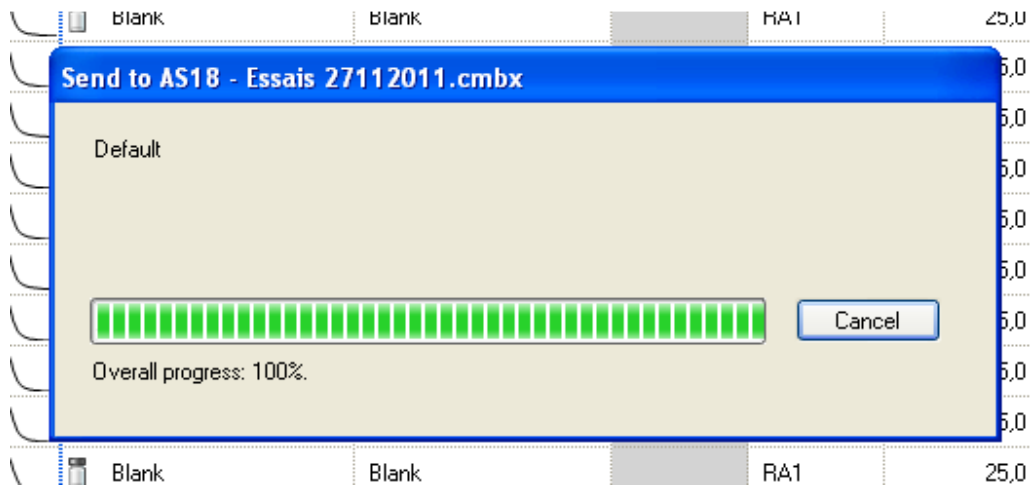
3. Press *Start*.



4. If you want to save the backup in a different location, click on the drop down arrow next to My Documents (A) and select the location where you want to save the file (B) and press Save.



5. A box will open showing you the progress of the backup process. When completed the box will disappear.



6. Open the location where your file has been stored, copy it on a USB key if needed, and email the file.

